

# PROJECT SOLUTION

## Mardix/JCA - KAO Park Data Centre

### PROJECT AT A GLANCE

**Product:** Eclipse  
**Customer:** Mardix  
**Location:** Harlow  
**Installation:** 2017

KAO Data hopes to build one of the largest commercial data centers in the UK, on the site previously owned by Nortel. The campus is located within KAO Park, a development that will offer 215,000 square feet of office space, itself located within the recently established Harlow Enterprise Zone.

### CHALLENGE

With even short outages in power causing major trouble to data centres, where a loss of power for 1/50 of a second can cause events that may keep IT equipment unavailable for anywhere between 15 minutes to many hours. This can result in huge monetary losses for businesses. Therefore it is critical that data centres have a reliable power supply.

### SOLUTION

Through JCA Engineering and Mardix, Hawker Siddeley Switchgear were awarded the opportunity to provide 26 panels of the Eclipse Switchgear to KAO Data Centre, allowing them to have a reliable power supply with minimal downtime and disruption.

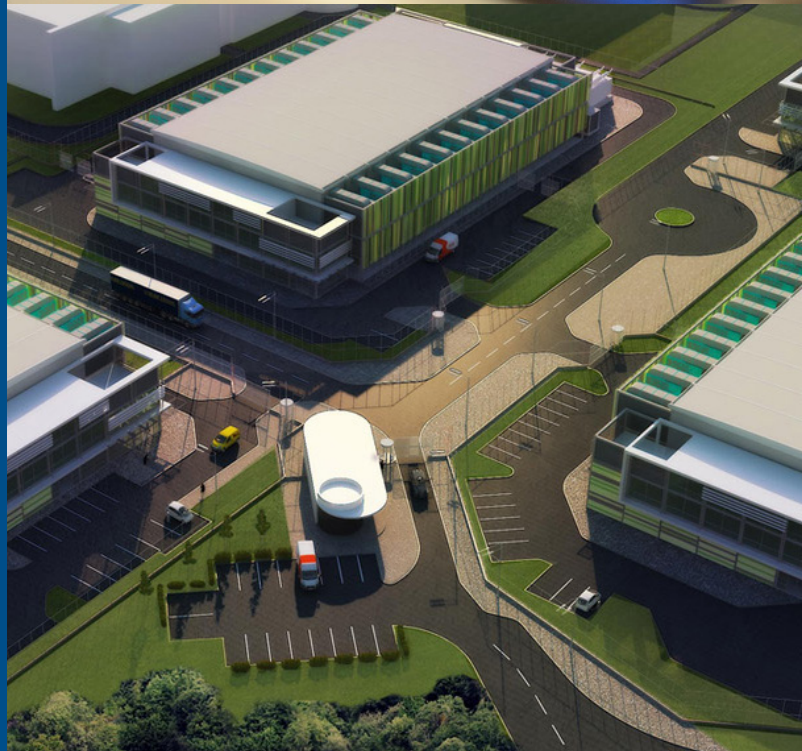
The project will be made up of 4 Switchboards, these will consist of:

- 5 panel main intake switchboard.
- 8 panel generator switchboard.
- 6 panel switchboard.
- 7 panel switchboard.

[www.hss-ltd.com](http://www.hss-ltd.com)

**HAWKER SIDDELEY SWITCHGEAR**

a **BRUSH** company



# Mardix